

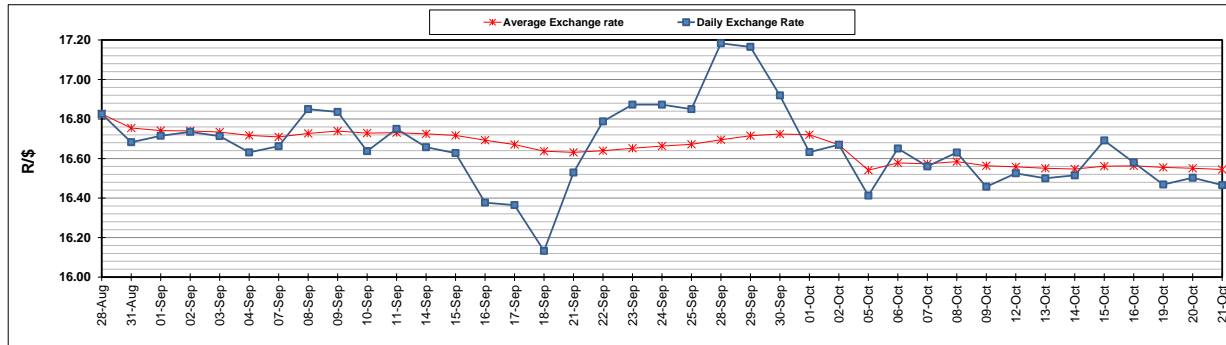
	PETROL 95 ULP	PETROL 93 ULP & LRP	DIESEL 0.05%	DIESEL 0.005%	ILL. PAR.
GAUTENG PUMP PRICE (SA c/l) AS FROM 07/10/2020	1,486.000	1,466.000	-	-	-
WHOLESALE PRICE (SA c/l) AS FROM 07/10/2020	-	-	1,237.560	1,238.960	640.828
SINGLE NATIONAL MAXIMUM RETAIL PRICE	-	-	-	-	798.000
BASIC FUEL PRICE - 21/10/2020 (SA c/l)	506.926	502.778	487.985	491.337	461.439
PRESS RELEASE CONTRIBUTION TO BFP 07/10/2020 - 21/10/2020 (SA c/l)	533.470	523.470	486.630	488.030	436.128
UNIT OVER/(UNDER) RECOVERY - 21/10/2020 (SA c/l)	26.544	20.692	(1.355)	(3.307)	(25.311)
AVERAGE BASIC FUEL PRICE 02/10/2020 - 21/10/2020	522.675	514.107	497.420	499.723	468.125
AVERAGE UNIT OVER/(UNDER) RECOVERY 02/10/2020 - 21/10/2020	17.652	14.291	8.496	8.236	(15.711)

ANALYSIS MOVEMENT OF AVERAGE OVER/(UNDER) RECOVERY

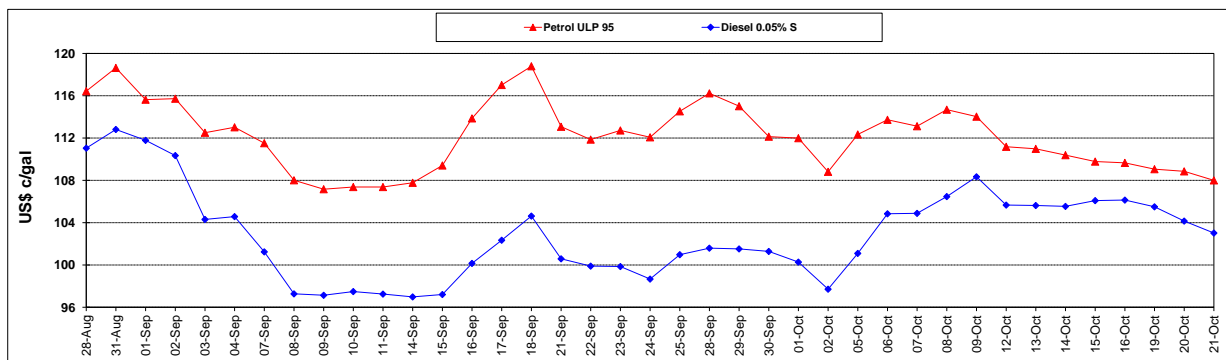
	PETROL 95	PETROL 93	DIESEL 0.05%	DIESEL 0.005%	ILL. PAR.
- MOVEMENT IN INTERNATIONAL PRODUCT PRICES	12.111	8.842	3.223	2.938	(20.674)
- MOVEMENT IN EXCHANGE RATE	5.541	5.450	5.273	5.298	4.963
AVERAGE UNIT OVER/(UNDER) RECOVERY 02/10/2020 - 21/10/2020	17.652	14.291	8.496	8.236	(15.711)

R/\$ EXCHANGE RATE - (R/\$16.4655 - 21/10/2020)

EXCHANGE RATE USED IN BASIC FUEL PRICE



INTERNATIONAL PRODUCT PRICES OF BASKET USED IN BASIC FUEL PRICE



BASIC FUEL PRICE IN SA CENTS PER LITRE

